

ARI Cobra

1 or 4 Channel Nano Dispenser



The Cobra Nano Dispenser

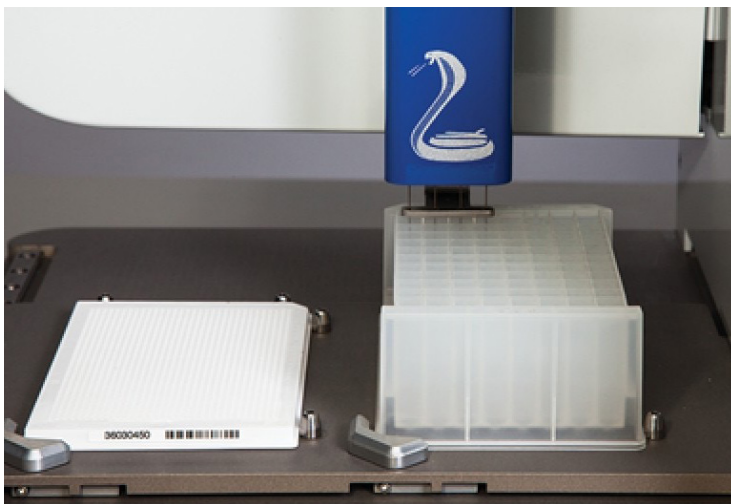
The Cobra is a non-contact nano dispenser available in 1 or 4 channels with dispense volumes ranging from 300 nl to 5 ml. The easy to use software and 2 plate positions add to the versatility of the Cobra.

Fast on-the-fly dispensing quickly fills plates. The Cobra can be used in aspirate/dispense mode or bulk dispense mode.

One or Four Channels

The Cobra 1 features a versatile 1-channel design ideal for small research labs, PCR master mix setups, assay development and cell dispensing. An aspirate/dispense mode allows minimal waste of expensive reagents. A bulk dispense mode can be used to quickly dispense large volumes.

The Cobra 4 features a 4-channel dispense head for increased throughput. An Aspirate/Dispense mode allows minimal waste of expensive reagents. Bulk dispense mode can fill plates from up to 4 reagent bottles. The Cobra 4 has the versatility to assign aspirate/dispense mode or bulk dispense mode on a per channel basis. Bulk dispense mode can be combined with the aspirate/dispense mode to optimize performance.



Compatible with deep well blocks or 1536 well plates.

“Absolutely one of the best instruments I’ve worked with for low volume dispensing. I will definitely share my positive experiences with my high throughput customers, and the A class support from (ARI) was immensely impeccable.”

Rama Badugu PhD, Application Support Consultant, Roche Diagnostics



FEATURES

- Ideal for PCR Master Mix dispensing
- Low dead volume minimizes waste
- Fast on-the-fly dispensing
- Dispense 300 nl to 5 ml
- Dispense any volume, any well
- Dispense gradients for direct dilutions
- 2 position plate deck
- Integrated wash system
- Computer control
- Accommodates 96, 384, 1536 and deep well blocks
- Accommodates 0.2 and 1.2 ml tubes
- Liquid level sensing on reagent bottles

PCR SetUps

Combined with the Roche LightCycler 1536 Instrument, the Cobra enables a high throughput, low sample volume Real Time PCR work flow which generates high performance data.

The Cobra is extremely reliable dispensing qPCR master mix into a Roche 1536 well plate. This can be verified using the Roche qPCR reagent, detecting this on their LCI 536 instrument using the 'master control' setting, which verifies the presence of master mix based on a neutral reference dye that is included in the reagent and doesn't otherwise impact the experiment.

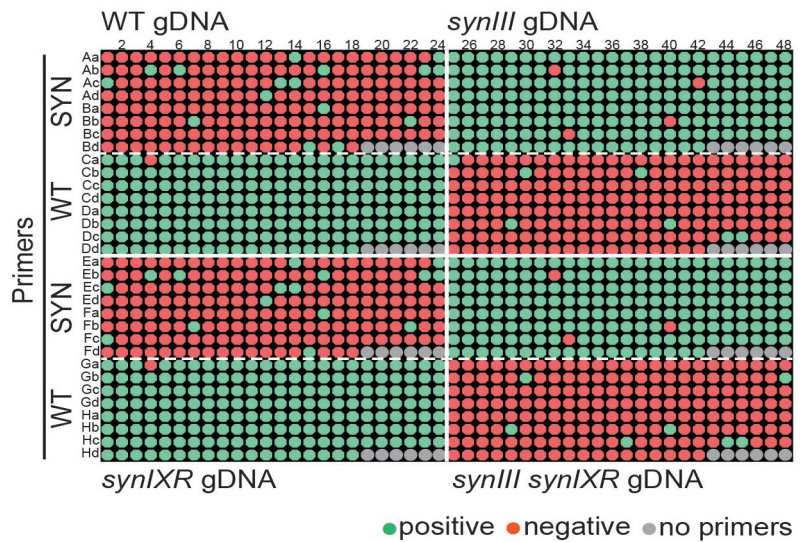
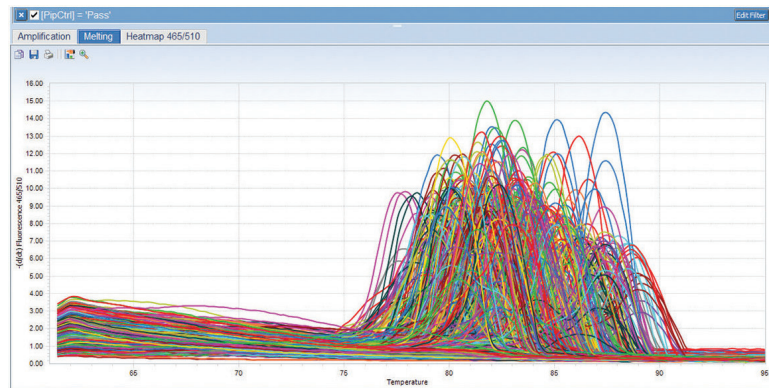


Image from: Mitchell et al. *JoVE* (2015); qPCRTag analysis - a high through put, real time PCR assay for *Sc2.0* genotyping

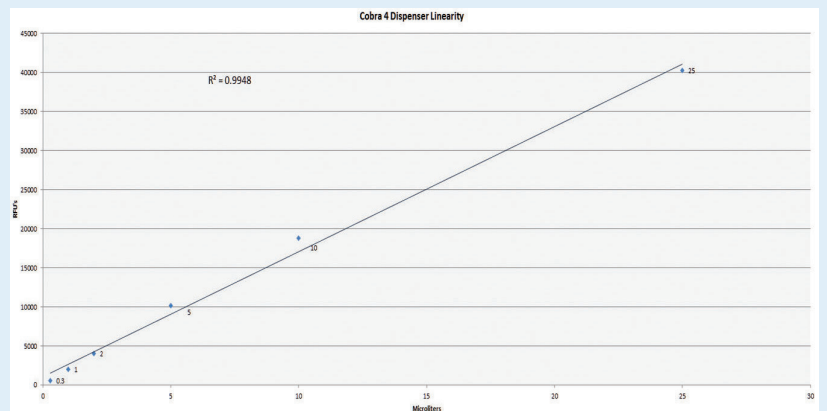


Dispense Volumes

The performance of the Cobra is reliable, precise and accurate through a large range of volumes.

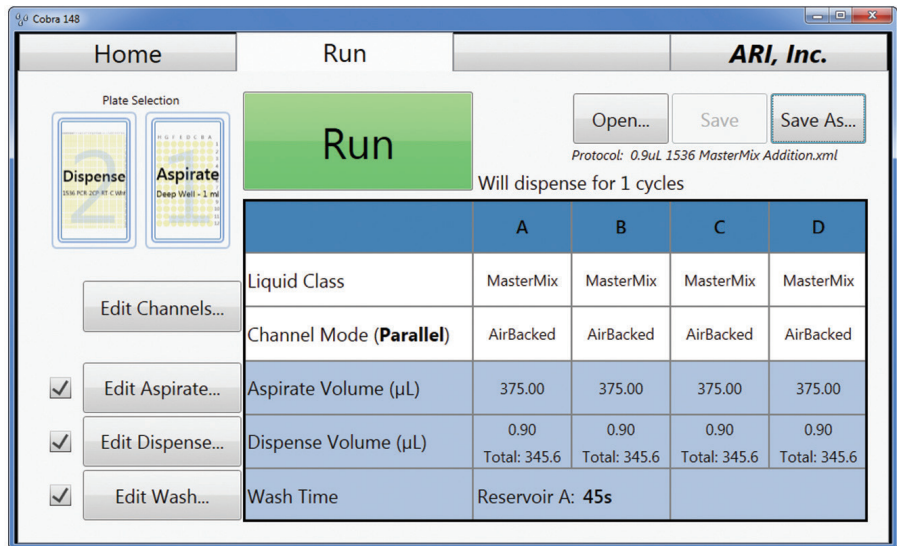
Cobra 4 Channel Nano Dispenser

Dispense Volume ul	Relative Fluorescence Value	CV ^{3/4}
25	40300	2.9
10	18762	3.5
5	10126	3.3
2	4022	2.9
1	2008	3.2
0.3	589	6.1



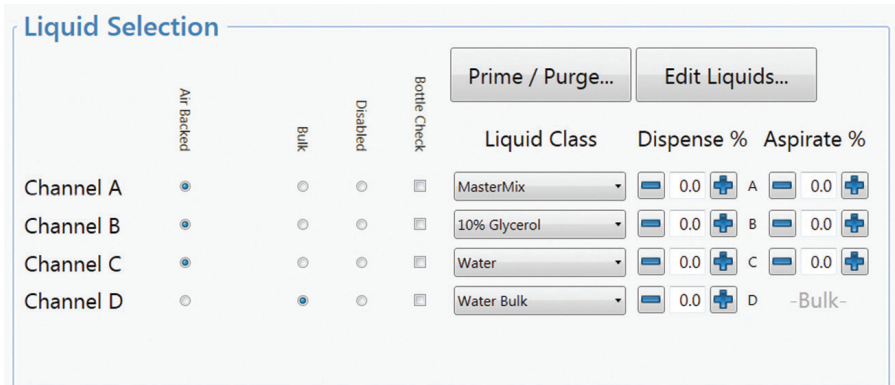
The Cobra Control Software

Easy to use software, with storable protocols and easy to understand interface. Easily set up complex dispense patterns using spreadsheet based input. Any tip dispensing to any well at any volume, with up to 4 independent reagents.



Multiple Dispense Modes

Each channel can be configured as an aspirate/dispense or bulk dispense channel with independent liquid class selection by tip.



Cobra 1	
Cat #	630-1000-10
Modes:	Aspirate/Dispense, Bulk Dispense
Channels:	1
Size:	14" (35.5) W 20" (50.8) D 16" (40.6) H (cm)
Weight:	46 lbs (21 kg)
Electrical:	100/240VAC 3 A, 50/50 HZ

Cobra4	
Cat #	630-1000-40
Modes:	Aspirate/Dispense, Bulk Dispense
Channels:	4
Size:	14" (35.5) W 20" (50.8) D 16" (40.6) H (cm)
Weight:	57 lbs (26 kg)
Electrical:	100/240VAC 3 A, 50/50 HZ

© Copyright 2024. Hudson Robotics, Inc. All rights reserved. The trademarks mentioned herein are the property of Hudson Robotics, Art Robbins Instruments Tomtec, Inc. or their respective owners. 0056.24.1