

ProLink Express



## Fully Automated Proteomics Workcell

*Scalable. Flexible. Remarkable.*

*For use in:*

*Proteomics*

*Toxicology*

*Antibody Production*

*Gene Assembly*

*Biomarker Discovery*

*ELISAs*

 **Hudson Control Group**

# ProLink Express - Fully Automated Proteomics Workcell

The **ProLink Express™** is the first fully automated proteomics workcell. It integrates all plate delivery and transfer operations with complete data tracking. It automates the entire process, from initial bacterial colony picking through final protein expression and measurement. The **ProLink Express** system is capable of delivering a plate to any of its instruments from any other instrument, **in any order** and **simultaneously** with other processes.

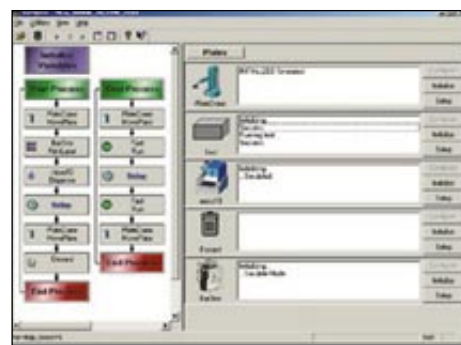


## Scalable

The **ProLink Express** is designed so that colony picking, growth, DNA prep and expression can be run individually or sequentially. All instrumentation faces outward so any component can be used manually. It is powered by our opportunistic SoftLinX™ scheduling software, which finds the most efficient ways to perform processes simultaneously. A user can run multiple batches in different stages of the process at the same time, or run any instrument individually while operating another fully automated run.

## Flexible

The **ProLink Express** integrates an automated colony picker with an incubator and a plasmid DNA prep system. A researcher can start with bacterial colony plates, isolate individual colonies into culture plate wells, grow the individual colonies and then extract the DNA plasmids in one seamless automated process without any human intervention. The system also provides the capability to re-attach DNA inserts onto expression vectors and perform in vitro or in vivo protein expression and detection.



*SoftLinX software makes it easy to interface the ProLink Express with other automated instruments for seamless process control.*

## Remarkable

The features and benefits of the **ProLink Express** make it simply remarkable – and offer multiple application opportunities within molecular biology. It links all the components needed for DNA expression of gene libraries. It enables automated gene expression for functional genomics, gene improvements and any other type of genomic research involving bacterial cultures, DNA prep and protein expression. The **ProLink Express** can be used in gene sequencing studies, forensic testing, cell toxicity studies and most ELISA assays.

## Features:

- Optimizes laboratory processes and equipment usage
- Designed to fit into available lab space
- Allows *independent* as well as *manual* access to and operation of all major system instruments
- Capable of delivering a plate to any of its instruments from any other instrument, in any order and simultaneously with other processes
- Includes Hudson Control Group's SoftLinX software, which provides an easy-to-use graphical interface to the **ProLink Express**. The software will enable the user to take full advantage of this system's ability to run as a single system or as multiple individual workcells, which is unique in the lab automation industry



Contract Holder  
GS-07F-9491S

**Hudson Control Group**  
Customized Solutions in Microplate Automation and Robotics